

CDAudio Help

TOPICS

[Overview](#)

[Main Controls](#)

[CDAudio Options](#)

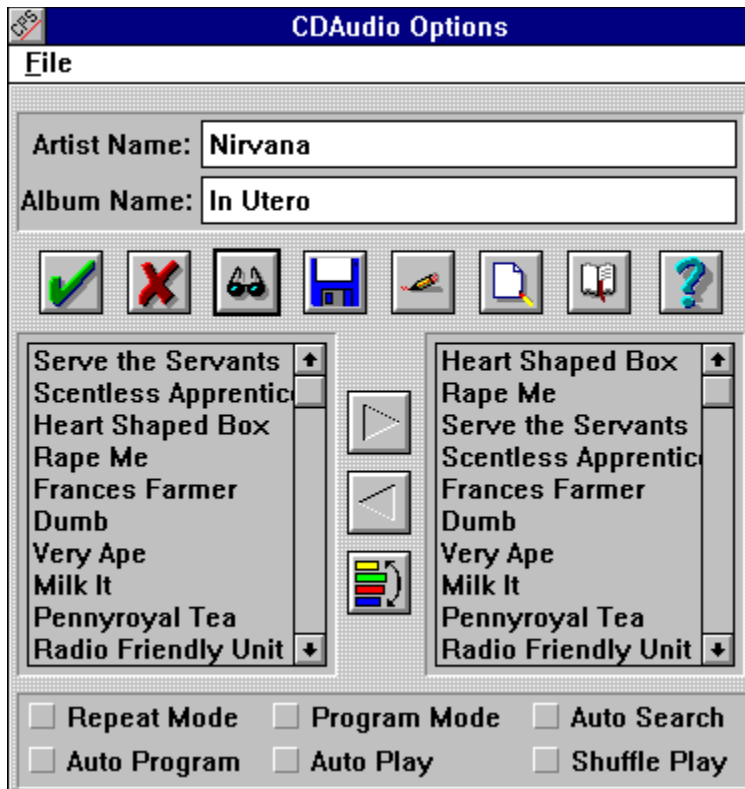
[Editing Albums](#)

[Mixer Support](#)

[About CDAudio](#)

[Registration](#)

Options Dialog



This is where you tell CDAudio what to do. Click on a region of the dialog to obtain more information on its usage.

Options Menu

Currently, the Options menu contains the following:

File

Clean Up Album File: every 50 updates or deletions, CDAudio rewrites the entire album file. However, sometimes you may wish to clean it up, especially if you want to manually edit it. Use this command to force a clean up, no matter how many updates have been performed.

Define Mixer Location: see Mixer Support

Artist and Title Fields

These fields identify the album that is currently in the drive. Fill them in with the appropriate information, and they will be saved along with the song listing when you save.

Song Listing

This list contains the song titles of the current album, as entered by you. Use the [Edit Album](#) button to edit this listing. Use this list to select tracks to go into the program listing.

Program Listing

This list contains the songs that have been programmed for CDAudio to play. If program mode is active, CDAudio will take its track information from this list rather than the song listing for playing, including while shuffling the disk.

OK Button



Use this button to accept the changes you have made, and go back to the main control panel. If CDAudio was playing while you were editing the disk, it will restart the song or program listing at the beginning and start playing from there.

Cancel Button



Use this button to cancel any changes you have made, and go back to the main control panel. If CDAudio was playing while you were editing the disk, it will continue to play as if you never had gone into the options dialog.

Search Button



This button searches the database for the current album. Use this button if you have Auto Search Mode off, or if you have just inserted a new CD into the drive, while the options dialog was open.

Save Button



This button saves the current album to the database.

Note: every 50 saves CDAudio will clean up your album file by removing albums that were marked for deletion, or updated (saved more than once)

Edit Button



This button opens the Edit Window

Delete Button



This button deletes the current album from the database. It requests confirmation, in case of a mistake. Use this button to remove unwanted or incorrect albums from the database. The album will be marked for deletion and removed after the next cleanup.

Registration Button



This button opens up the Registration Window

About CDAudio Button



An abbreviated about screen for those without the help file.

Add to Program List



The highlighted songs in the Song Listing are added to the program listing to the right.

Shortcut: doubleclick on any song in the song listing to add it to the program listing.

Remove From Program List



One or more unwanted songs can be removed from the program listing, depending upon how many songs in the list have been highlighted.

Swap Button



This button allows you to swap two songs in the program listing. Two songs must be selected in the program list for this button to work.

Repeat Mode

Repeat Mode will repeat the current listing (program or song list) once the last song in the list has been played.

Program Mode

Program Mode uses the program listing for its song order, rather than the song listing. However, it will use the song listing when you first insert the CD, unless Auto Program mode is turned on.

Auto Search Mode

Auto Search Mode searches the database for the current album and displays it in the options dialog. This is exactly as if you had press the Search Button.

Auto Program Mode

Auto Program Mode tells CDAudio that you want use the program listing of an album as default, rather than the song listing.

Auto Play Mode

Auto Play mode tells CDAudio to begin playing as soon as its activated, and there is media in the CDRom. In conjunction with Auto Program Mode and Auto Search, the album will be retrieved from the database and played according to the saved program listing.

Shuffle Mode

Shuffle Mode randomizes the order of the song listing. If program mode is active, the program listing is randomized instead. This is so that unwanted songs will not be in the shuffled listing.

Main Controls



This is the main control dialog of CDAudio. Click anywhere on it for more information on that button or location, and what it does.

Exit CDAudio



This button closes and terminates CDAudio. If music is playing, it will quit.

Title Bar

The title bar contains either CDAudio or the title of the song that is playing, if the current album has been entered. See [Editing Albums](#) for more information.

Digits Display

This display shows the current track number that is playing, or the song that is cued when searching forward or backward.

Fast Forward/Rewind



These buttons change the current song being played or cued. If program mode is active, the titles will change according to the current program.

Stop



This button stops playing the current album, and resets the program or album cue to the beginning.

Play/Pause



This button plays and pauses CDAudio.

Options Button



This button opens up the options dialog box. See [CDAudio Options](#) for more information.

Mixer Button



This button activates a mixer program supplied by you. See [Mixer Support](#) for more information.

Editing Albums



This is where you edit an album's song list, for use in the options dialog. Click on a region of interest for more information. Note: As of this release, you can now edit a song list by deleting and inserting song titles. Click the add and delete song buttons for more details.

Album Data

The album data is displayed for information purposes only. To change this album data, you must enter the appropriate information in the artist and title fields of the Options dialog box.

Song Title

The song title editbox allows you to enter in appropriate titles for tracks to be saved to CDAudios database. Enter the songs in order from the first track to the last, hitting enter to add a song to the song list.

Song List

The list of songs of the current record as stored in memory are listed here. You can alter this list by using the buttons to the right. This is the same list found on the left side of the options dialog box. Songs can now be inserted and deleted into this list, click the add and delete song buttons for details.

Add Song



This button inserts or adds the text from the Song Title Edit field into the song list. Pressing the Enter key while typing the name of the song will also activate this button. To insert an entry into the middle of the list, select the insertion point and press this button.

Remove Song



This button removes the currently selected song from the playing list. Select the song that you did a typo on, and press this button.

OK Button



Press this button to go back to the Options dialog box, and keep the changes you have made (if any) to the song listing.

Cancel Button



Press this button to go back to the Options dialog box, and discard the changes you have made (if any) to the song listing.

Mixer Support

CDAudio supports an external mixer program (like sbwmix or sb16wmix etc). You can use the mixer button on the right side of the main screen to activate this external mixer.

Defining your mixer program:

The first time you press the mixer button, or whenever you choose define mixer location from the file menu of the options dialog, you will get a small dialog asking for the location of the mixer file. Either type in the pathname and program specification of the mixer program, or click on the browse button to graphically select the file.

Registration

I made enough money off CDAudio, so registration is **Free!** In order to receive a code to allow you to activate program mode in CDAudio, you must mail me a letter either by post or email, so I can keep a database of users, and so I can tell you really looked at this help file :)

If youre rich, or just feel like giving away money, send a check or money order to:

Noel Dillabough
General Delivery
Blind River, ON
POR 1BO

Upon receiving your letter, I will send you the newest version of CDAudio and a registration code. Please specify the name you want shown in the registration window.

For the fastest possible service, send me your email address if you have one. I can be reached on the internet at:

noel@ramsey.cs.laurentian.ca

About CDAudio

CDAudio is distributed as shareware. Rather than display those awful buy-me nag screens, I decided to not put in any runtime bug screens, and allow all features to work except for program mode. There is no need to register CDAudio if you do not want to be able to program your CDs.

Feel free to distribute CDAudio freely, in its .arj format, to BBS's or your friends.

Also, if there are any questions or comments about CDAudio, or ideas for new features, please mail me either by post or email at:

Noel Dillabough
General Delivery
Blind River, ON
POR 1B0

noel@ramsey.cs.laurentian.ca

Enjoy!

Overview

CDAudio by Noel Dillabough

Hello!

I just got into the multimedia age when I went out and purchased one of those CDROM/SoundBlaster combos. I played with it for a while but eventually, my CDROM turned into an installation diskette (used once every blue moon) and as an audio device while I programmed.

Since this release, I have found a couple of other programs that are very very good, and you can find them on the Internet at cica.indiana. They are called CDDB07.ZIP and WINCDP20.ZIP the last time I looked at them. Check them out!

CDAudio Requirements:

- 1) Windows 3.1
- 2) An installed MCI compatible CDAudio driver
- 3) A CDROM complying with MSCDEX
- 4) A windows supported soundcard connected to the CDROM if you want to use programs like SB16WMIX to control volume, etc.

CDAudio Capabilities:

CDAudio plays audio CD's much like a conventional CD player. There is play, stop, skip forward, skip backward, pause, etc.

What makes CDAudio different from conventional players is its database management of CDs. You insert a disk, scan it, enter its artist, title, and songs and then save it. From then on, CDAudio can recognize that the disk you have in the player is that disk, and will load in the song's titles etc.

TOPICS

[Main Controls](#)

[CDAudio Options](#)

[Editing Albums](#)

[Mixer Support](#)

[About CDAudio](#)

[Registration](#)

